

TP53(R175H)

Catalog Number: 26072

Gene Symbol: TP53(R175H)

Description: Anti-TP53(R175H) Mouse Monoclonal Antibody

Background: Background: TP53 belongs to the p53 proteins family. It is ubiquitously expressed, acts as a tumor suppressor in many tumor types and induces growth arrest or apoptosis depending on the physiological circumstances and cell type. Defects in TP53 are a cause of esophageal cancer (ESCR), lung cancer (LNCR), adrenocortical carcinoma (ADCC), choroidplexus papilloma (CPLPA) and so on.

Immunogen: A synthetic peptide from the internal region of TP53 which includes the mutation of R175H, human origin.

Tested Applications: ELISA, WB, IHC

Recommended Dilutions:

ELISA:	1:1000-1:5000
WB:	1:1000-1:5000
IHC:	1:50-1:100

Concentration: 1 mg/ml

Host: Mouse

Clonality: Monoclonal

Isotype: IgG

Purity: Purified from ascites

Format: Liquid

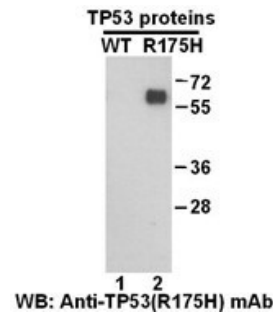
Preservative: No

Constituents: PBS (without Mg²⁺ and Ca²⁺), pH7.4, 150 mM NaCl, 50% glycerol

Species Reactivity: Anti-TP53(R175H) antibody recognizes TP53(R175H) of vertebrates.

Storage Conditions: Store at -20°C. Avoid freeze / thaw cycles.

Western blot:

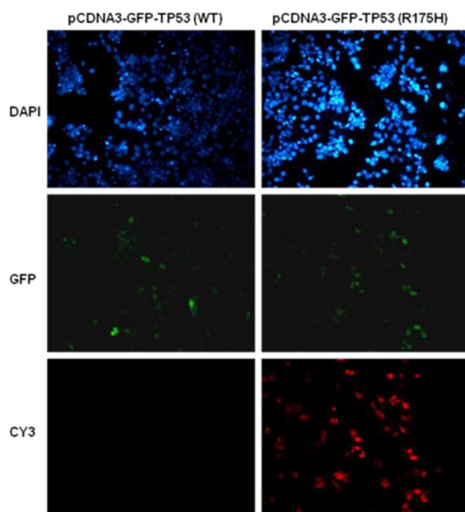


Western blot analysis of recombinant TP53(R175H) and wildtype proteins.

Purified His-tagged TP53(R175H) protein (Cat. # 10207) and wild type protein (Cat. # 10202) were blotted with anti-TP53(R175H) monoclonal antibody (Cat. # 26072).

FOR RESEARCH USE ONLY. NOT FOR DIAGNOSTIC APPLICATIONS

Immunofluorescence:



Immunofluorescence of cells expressing TP53 proteins with anti-TP53 (R175H) antibody.

HEK293T cells were transfected with pCDNA3-GFP-TP53 (WT) plasmid (left column) or pCDNA3-GFP-TP53 (R175H) plasmid (right column), then fixed and stained with anti-TP53 (R175H) monoclonal antibody (Cat. # 26072)

FOR RESEARCH USE ONLY. NOT FOR DIAGNOSTIC APPLICATIONS